

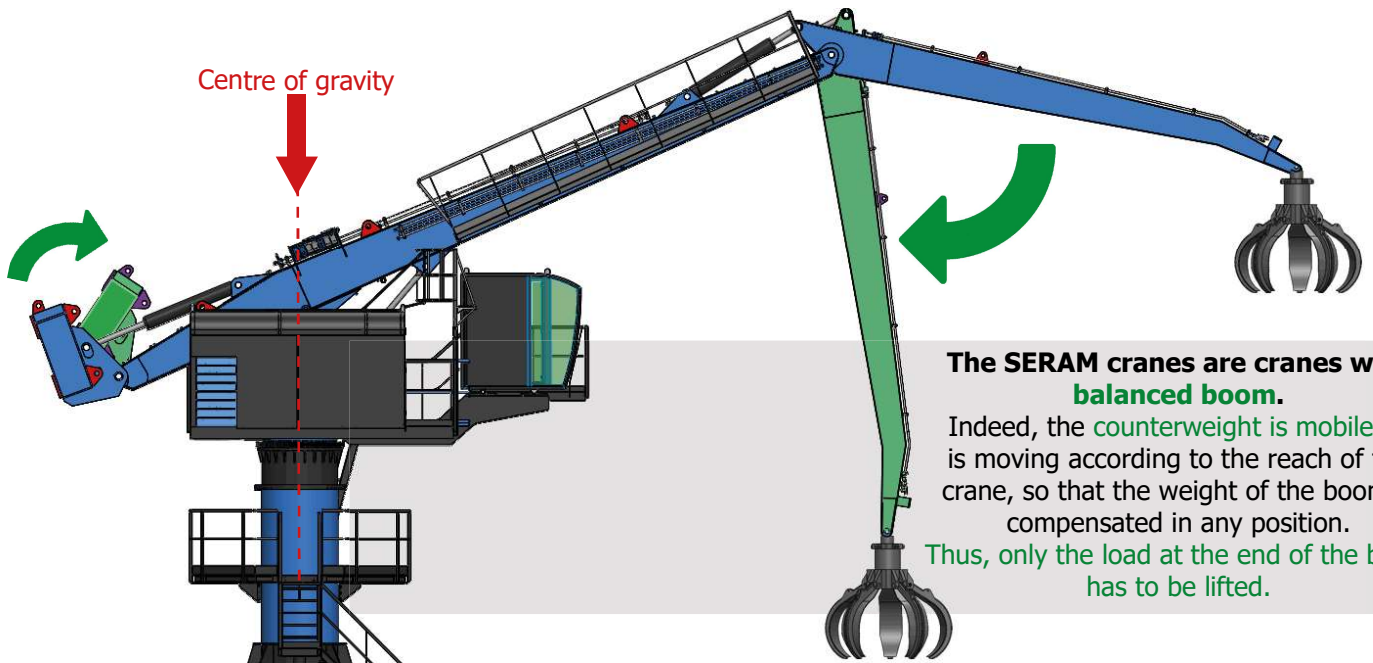


EQUILIBRIUM HANDLING CRANE

Equilibrium
SERIES 7
ES725, ES730

SERAM
L'EXPERIENCE

The Hydraulic Balance System



The SERAM cranes are cranes with balanced boom.

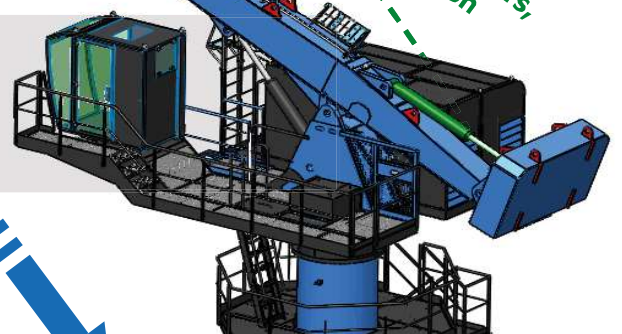
Indeed, the counterweight is mobile. It is moving according to the reach of the crane, so that the weight of the boom is compensated in any position.

Thus, only the load at the end of the boom has to be lifted.



The synchronisation of the counterweight according to the boom is made through a fully hydraulic connection. This technology is patented worldwide.

The synchronisation of the cylinders, through hydraulic connection



Unequalled operating costs

Up to 80% of energy savings compared to a thermic excavator

Thermic excavator

100%

Electrical non balanced excavator

50%

50% savings

Electrical balanced crane SERAM

25%

75% savings

Low working pressure = Exceptional life-time

The average working pressure is half lower than for a conventional excavator, the components are then less sollicitated, for the same performances

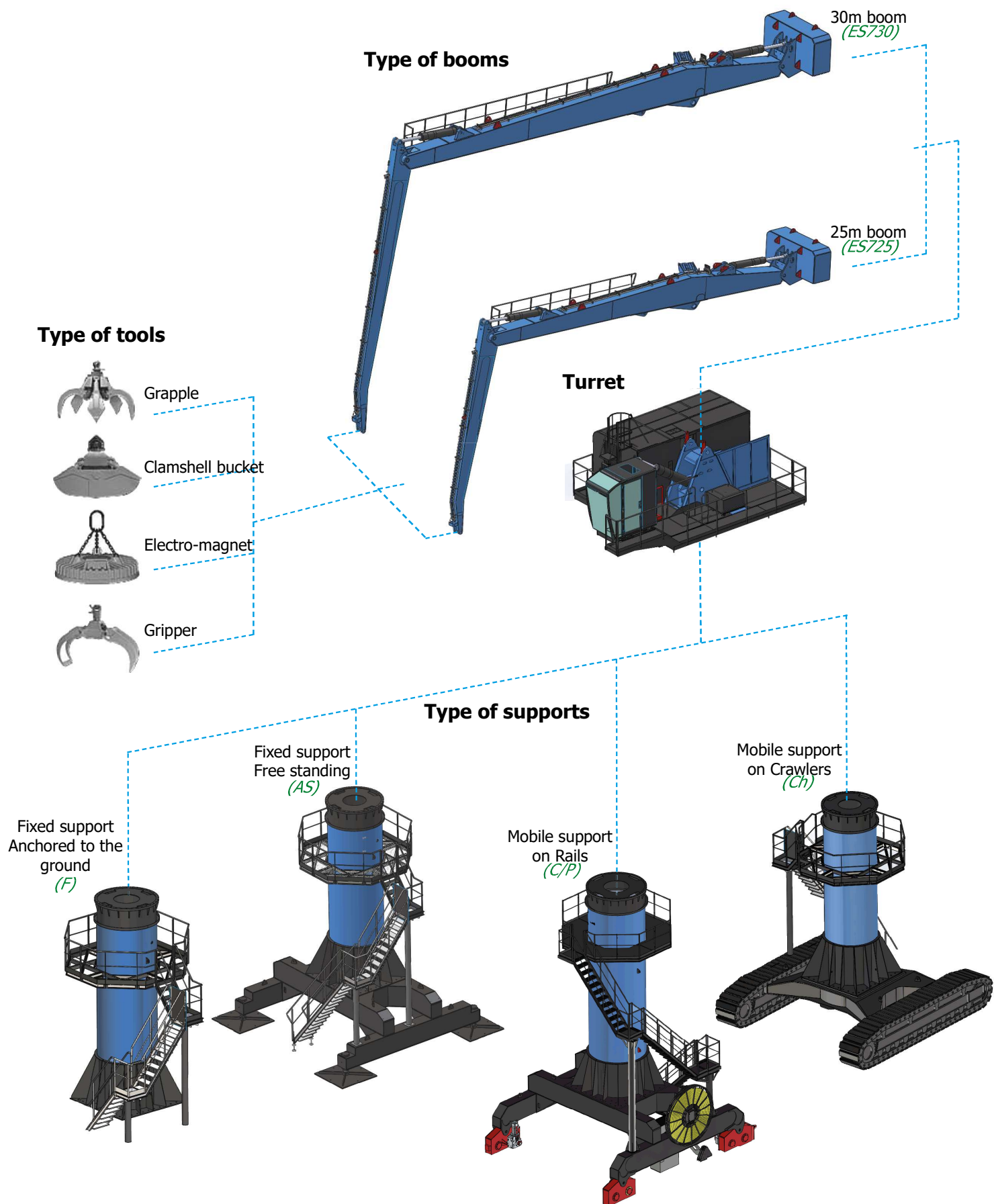
Non balanced excavator

~320 bars

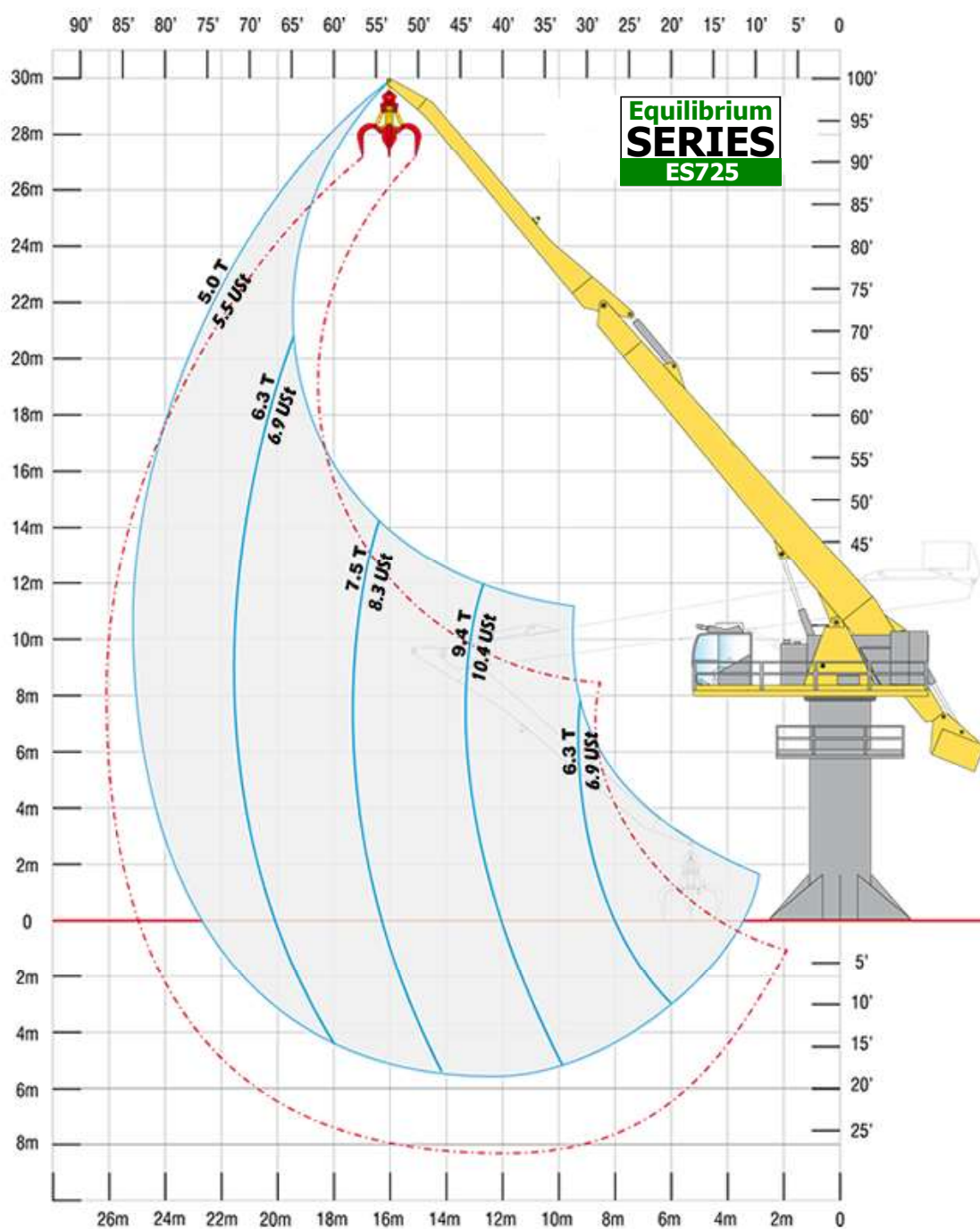
Electrical balanced crane SERAM

~150 bars

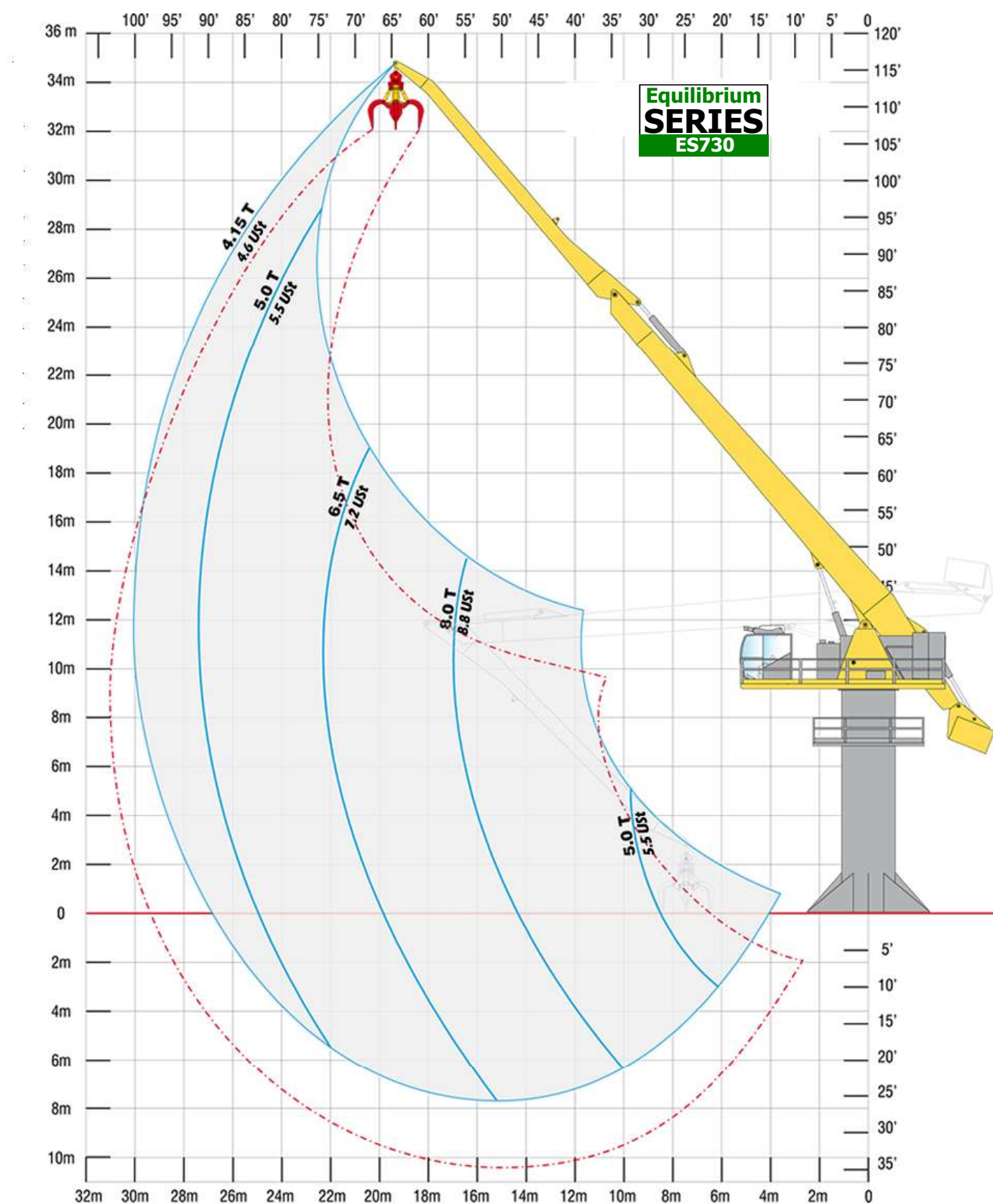
The different components



Load chart



Load chart



Technical data

GENERAL FEATURES		ES725	ES730
Power		150t/m	150 t/m
Horizontal maximum reach		25 m	30 m
Lifting capacity at full reach		6 t	5 t
Length of the main arm		14 m	17 m
Length of the dipper arm		11 m	13 m
Weight (with free standing support)		142 t	156 t
ELECTRICAL SYSTEM			
Power of the main electrical motor		200 kW	
Type of start of the main motor		Star-delta or speed drive	
Voltage		400V / 480V / 600V - 50Hz/60Hz	
HYDRAULIC SYSTEM			
Pumps for the movements of the boom		280 cc + 135 cc	
Average working pressure		220 bars	
Pump for rotation		210 cc	
Capacity of the tank		1600 litres	
Filtration		2 filters of 10 microns	
Cooling system		In line	
Lubricating system		2 groups with separated circuits	
ROTATION			
Rotation motor		2 motors MS50	
Ø of the ring gear		Ø 2300mm	
Rotating speed		4 rpm	
CYLINDERS			
Type of cylinders		280 x 160 x 1750mm	
TYPE OF SUPPORT			
Fixed support anchored to the ground		Base de 5m x 5m - Ht: 10m	
Fixed support, free standing		Chassis of 7.5m x 7.5m - Ht: 10m	
Mobile support on rails		Trolley of 7.5m x 7.5m - Ht: 10m	
Mobile support on crawlers		Upon request	

OPERATING CABIN

- New raised and advanced operating cabin, in order to optimize the overview in the different feeding areas (shears, shredders, vessels, etc...).
- Large glazed area, athermic and safety type.
- Comfortable standard equipment: manipulators with control console, reversible air conditioning, control and monitoring screen, adjustable driver seat, MP3 player, etc...

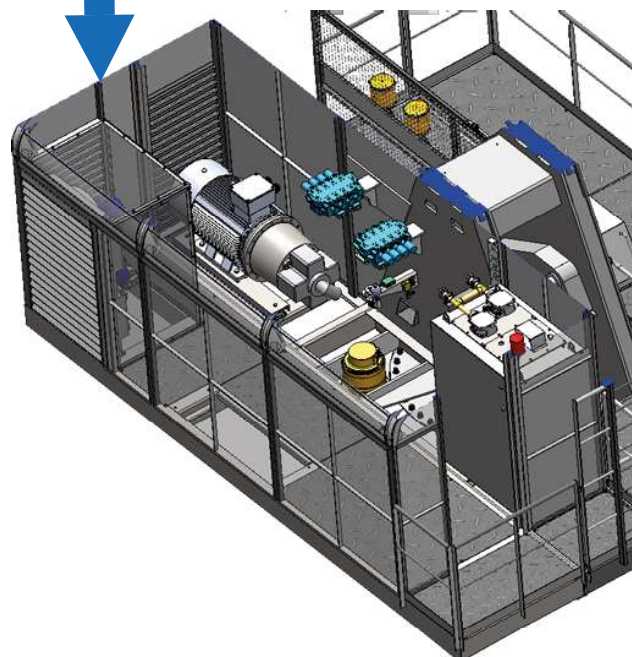
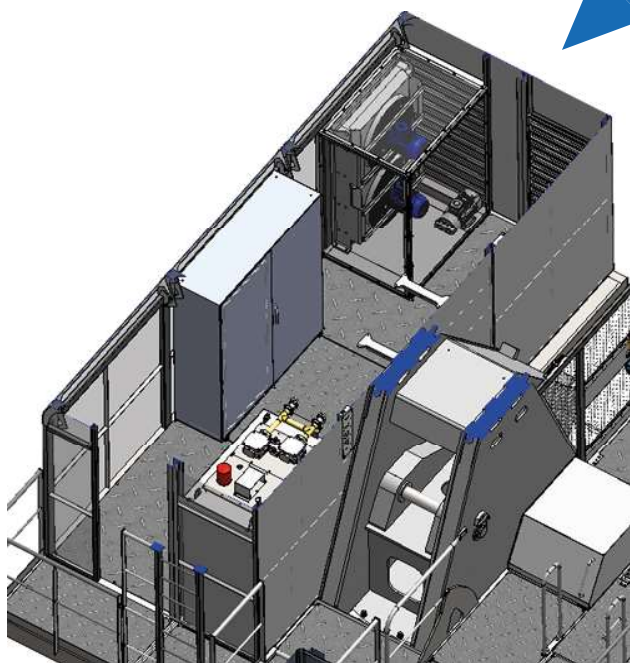


Technical data

MACHINE ROOM

The machine room now includes the entire motor pump group, but also the coolers and the electrical cabinet. A set designed for easy and accessible maintenance.

This machine room can be thermally insulated and equipped with a heating system, for use in the cold countries.



Equilibrium **7**

SERIES

ES725, ES730



SERAM did not wait for the climate emergency to manufacture clean machines, since **SERAM** has chosen **electricity** to power its cranes **from 1973**.

SERAM patented **the balanced boom in 1984**, saving 45% of electrical energy*.

SERAM - An Ecological and Economic Awareness



SERAM

SERAM SA
817 blvd Marius Berliet - 66000 PERPIGNAN (France)
Office: +33 4 68 61 02 28 - Mail: seramsa@seram.net
www.seram.net