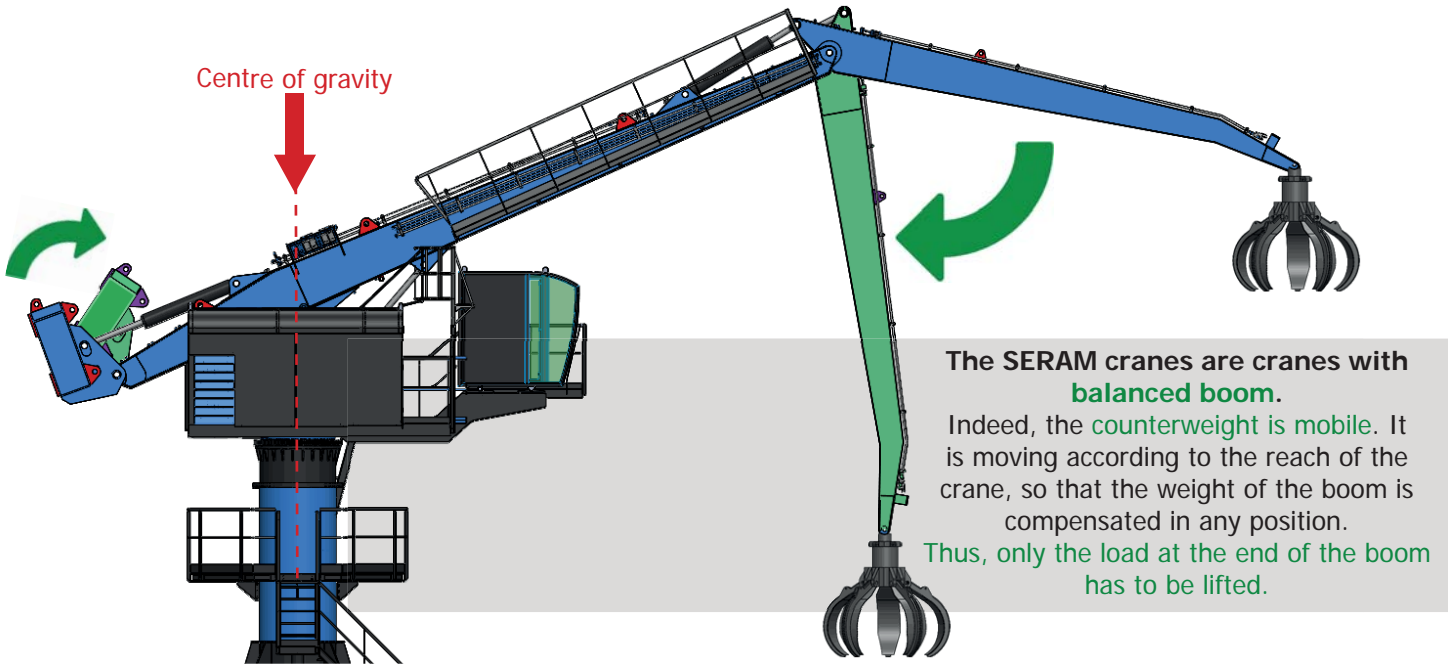


EQUILIBRIUM HANDLING CRANE

Equilibrium
SERIES 6
ES625, ES630

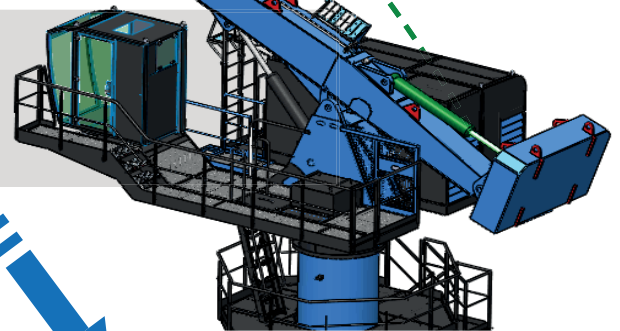
SERAM
L'EXPERIENCE

The Hydraulic Balance System



The synchronisation of the counterweight according to the boom is made through a fully hydraulic connection. This technology is **patented worldwide**.

La synchronisation des vérins, par connexion hydraulique



Unequalled operating costs

Jusqu'à **80% d'économie d'énergie** par rapport à une pelle thermique

Thermic excavator

100%

Electrical non balanced excavator

50%

50% d'économie

Electrical balanced crane SERAM

25%

75% d'économie

Low working pressure = Exceptional life-time

La pression moyenne de travail est de **moitié inférieure** à une pelle conventionnelle, les composants sont donc moins sollicités, pour des performances égales

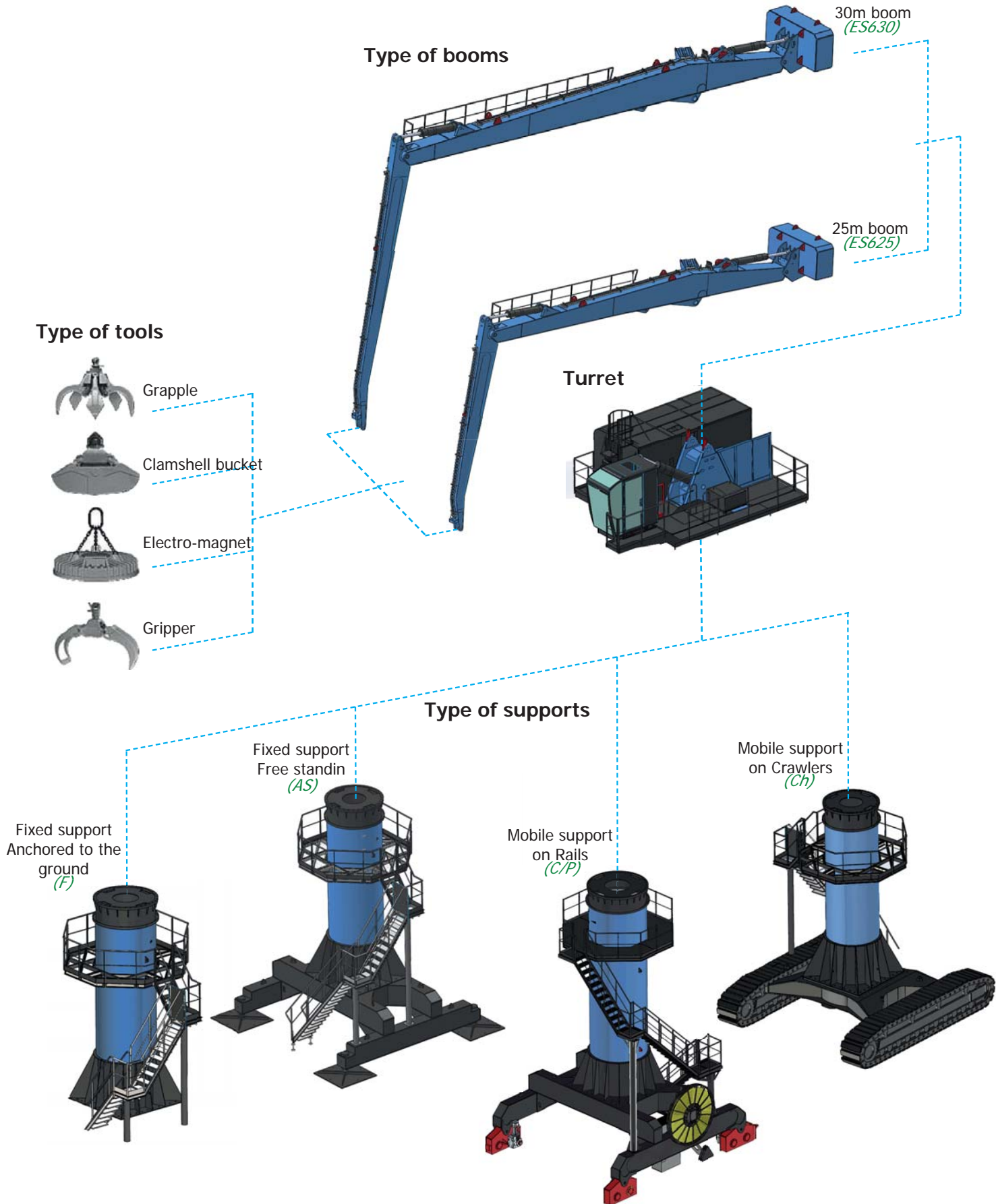
Non balanced excavator

~320 bars

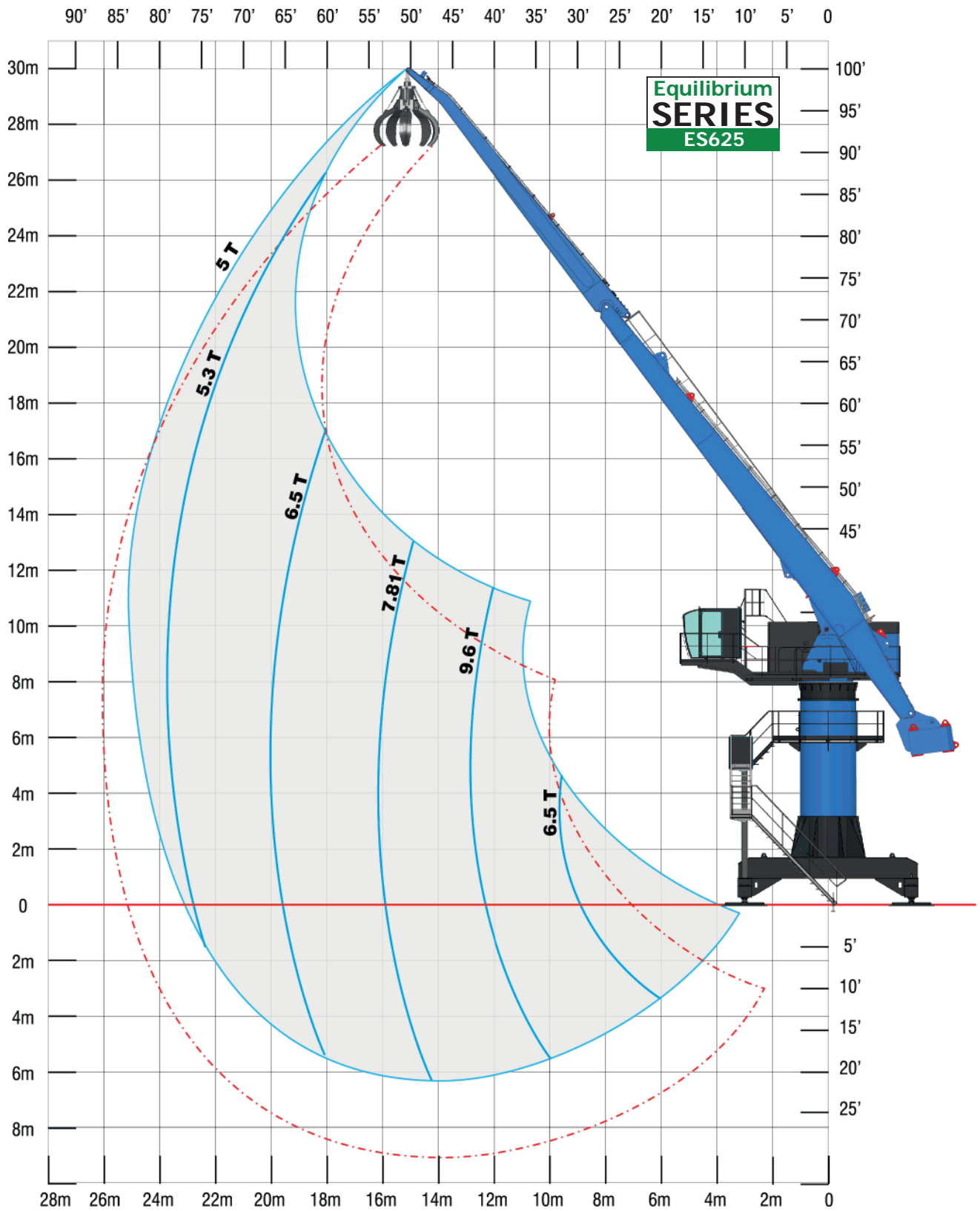
Electrical balanced crane SERAM

~150 bars

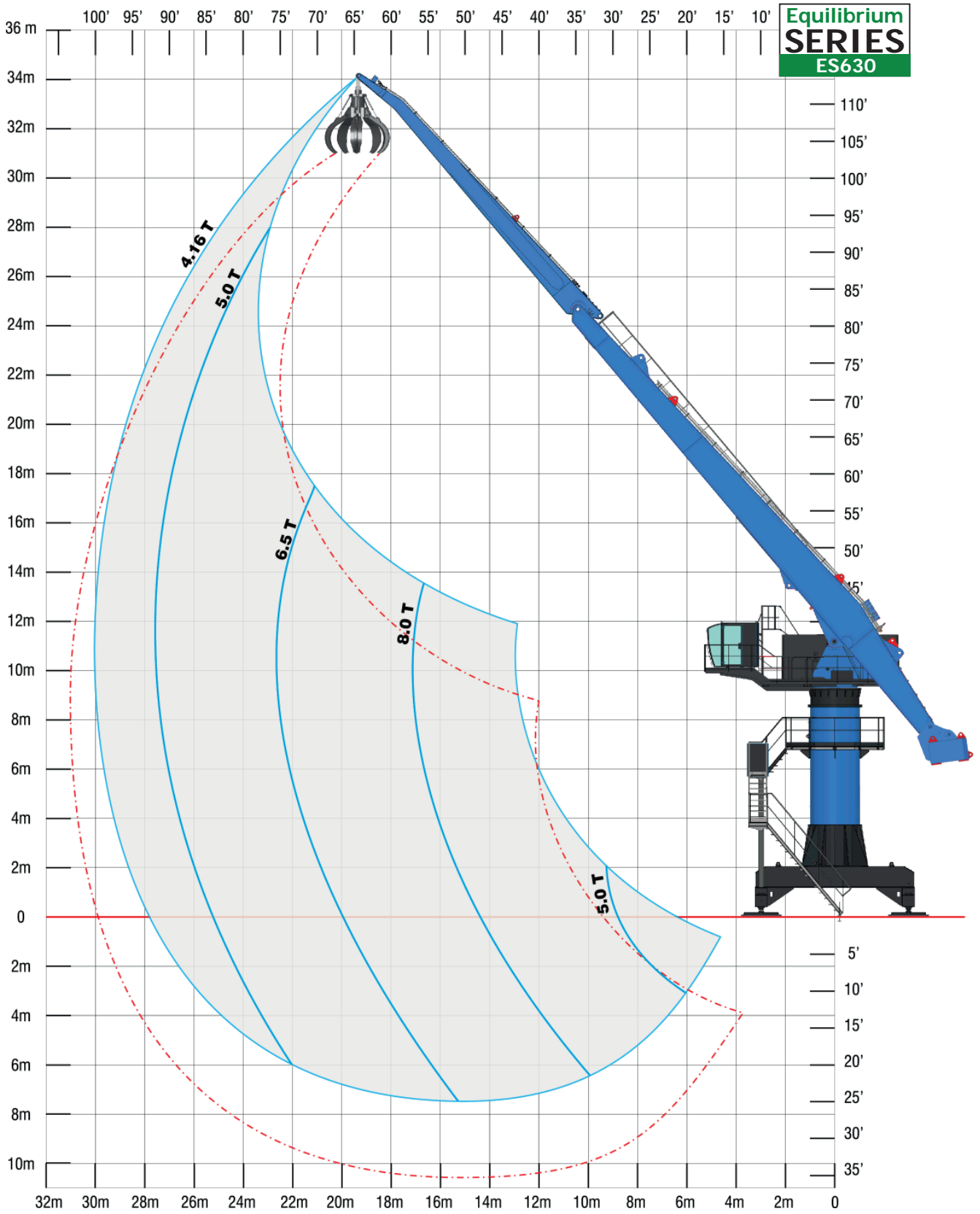
The different components



Load chart



Load chart



Technical data

	ES625	ES630
GENERAL FEATURES		
Power	125 t/m	125 t/m
Horizontal maximum reach	25 m	30 m
Lifting capacity at full reach	5 t	4.16 t
Length of the main arm	14 m	17 m
Length of the dipper arm	11 m	13 m
Weight (with free standing support)	122 t	132 t
ELECTRICAL SYSTEM		
Power of the main electrical motor	160 kW	
Type of start of the main motor	Star-delta or speed drive	
Voltage	400V / 480V / 600V - 50Hz/60Hz	
HYDRAULIC SYSTEM		
Pumps for the movements of the boom	280 cc	
Average working pressure	220 bars	
Pump for rotation	105 cc	
Capacity of the tank	1600 litres	
Filtration	2 filters de 10 microns	
Cooling system	In line	
Lubricating system	2 groups with separated circuits	
ROTATION		
Rotation motor	2 motors MS50	
Ø of the ring gear	Ø 1790mm	
Rotating speed	4 tr/min	
CYLINDERS		
Type of cylinders	250 x 140 x 1750mm	
TYPE OF SUPPORT		
Fixed support anchored to the ground	Base de 5m x 5m - Ht: 9m	
Fixed support, free standing	Chassis of 6.5m x 6.5m - Ht: 9m	
Mobile support on rails	Trolley of 6.5m x 6.5m - Ht: 9m	
Mobile support on crawlers	Upon request	

OPERATING CABIN

- New raised and advanced operating cabin, in order to optimize the overview in the different feeding areas (shears, shredders, vessels, etc...).
- Large glazed area, athermic and safety type.
- Comfortable standard equipment: manipulators with control console, reversible air conditioning, control and monitoring screen, adjustable driver seat, MP3 player, etc...

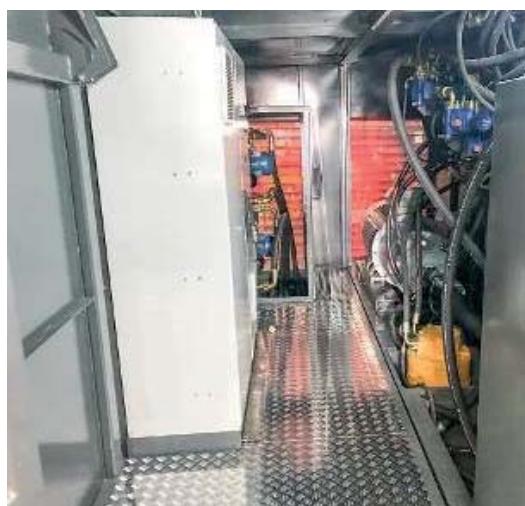
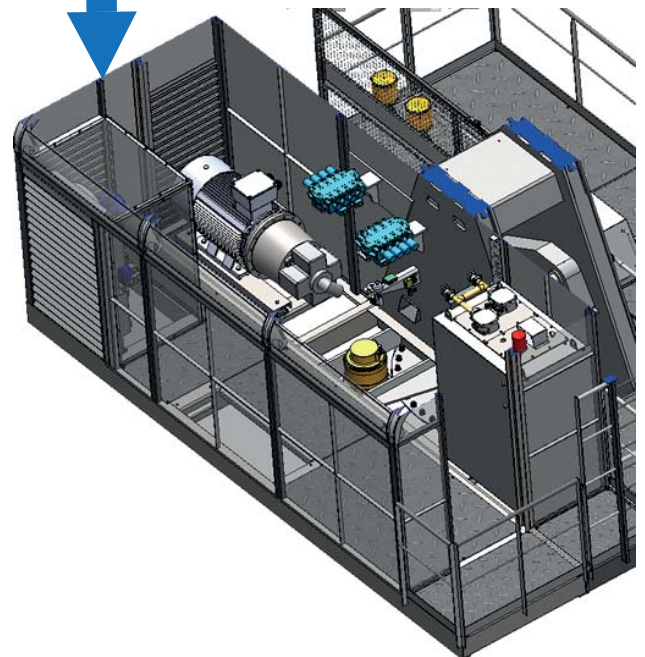
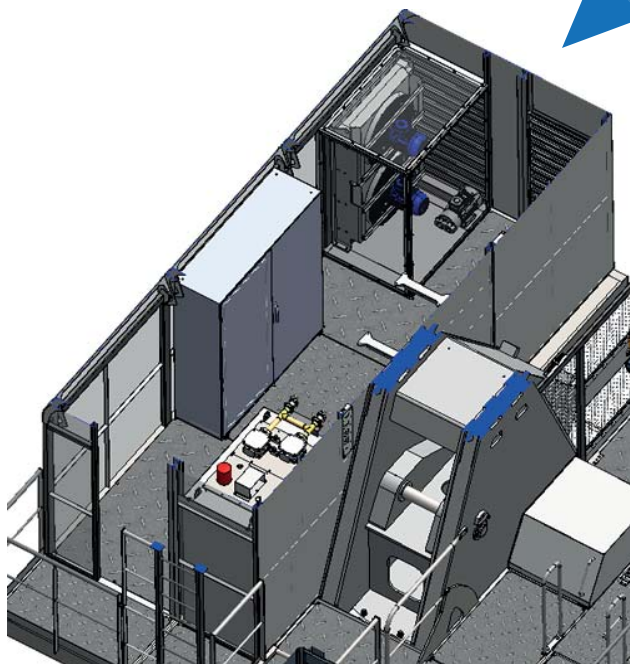


Technical data

MACHINE ROOM

The machine room now includes the entire motor pump group, but also the coolers and the electrical cabinet. A set designed for easy and accessible maintenance.

This machine room can be thermally insulated and equipped with a heating system, for use in the cold countries.



Equilibrium
SERIES 6
ES625, ES630



*SERAM did not wait for the climate emergency to manufacture clean machines, since **SERAM** has chosen **electricity** to power its cranes **from 1973**.*

*SERAM patented **the balanced boom in 1984**, saving 45% of electrical energy*.*

SERAM - An Ecological and Economic Awareness 

SERAM

SERAM SA
817 blvd Marius Berliet - 66000 PERPIGNAN (France)
Office: +33 4 68 61 02 28 - Mail: seramsa@seram.net
www.seram.net