

SERAM

LIFTING BALANCED
CRANES

S65

S65.20E



90 kW



20 m
66 ft



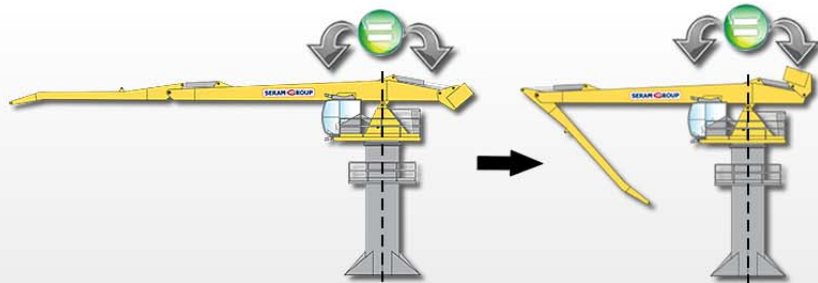
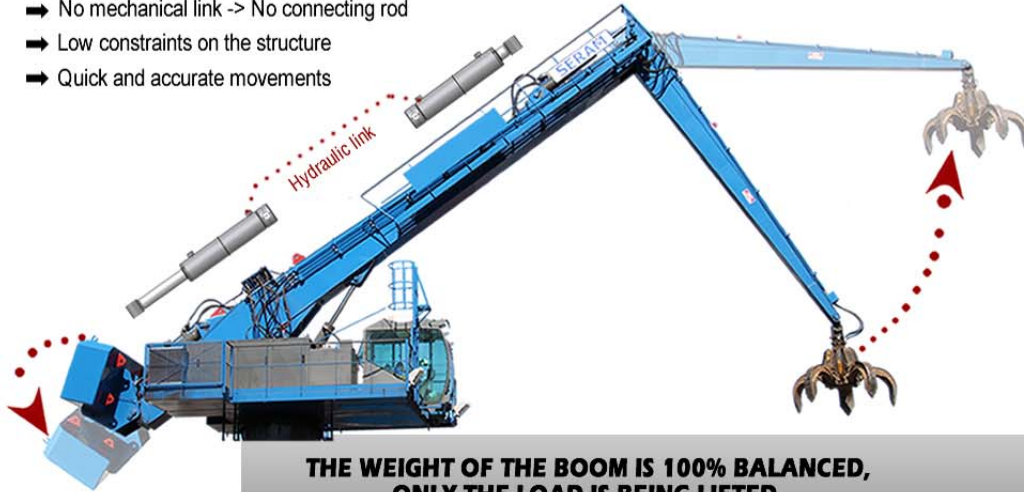
58 t / 82 t
64 USt / 90 USt

THE SERAM HYDRAULIC BALANCING THE EASY AND EFFICIENT SOLUTION

S65
S65.20E

The SERAM crane is the **only** balanced crane **by hydraulic system**

- ➔ No mechanical link -> No connecting rod
- ➔ Low constraints on the structure
- ➔ Quick and accurate movements



Enjoy the **unique advantages** of the balanced crane

Unequaled operating costs

Up to **80% energy consumption** compared to a diesel conventional crane

Diesel Conventional Crane

- 50%

Electric Conventional Crane

- 80%

SERAM Electric Balanced Crane

An exceptional lifetime of the hydraulic components

The average working pressure of a SERAM crane is **55% lower** than a conventional crane.

~ 320 bars
~ 4650 psi

Conventional Crane

~ 140 bars
~ 2030 psi

SERAM Balanced Crane

THE SERAM TECHNOLOGY

THE SERAM STRUCTURE THE RELIABILITY

World Reference...

FEM CLASSIFICATION*
A8M8

The most performing grade on the market



+ of 2 Millions of lifting cycles

+ of 20 Years of operating

+ of 40 000 Hours of working operation

*FEM: European Federation of Materials Handling

THE SERAM MAINTENANCE THE SIMPLICITY

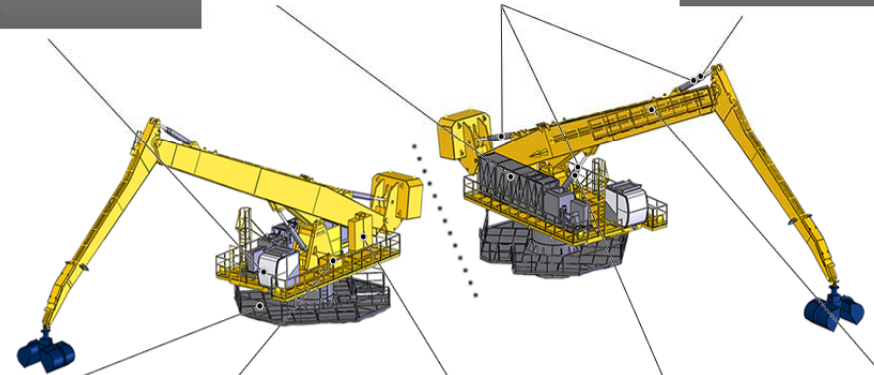
All the main components of the crane have an **easy access**

The SERAM DATA
(System of assistance to diagnosis)
Direct location on the dashboard of the cabin

THE HYDRAULIC UNIT
Direct access from the lateral platform

A SINGLE CYLINDER
(The 3 cylinders are identical and interchangeable)

DIPPER ARM CYLINDER
Direct access from the maintenance walkway



THE RING GEAR
(External toothing / 100% visible)
Direct access from the intermediate platform

THE SWING MOTOR
Direct acces from the lateral platform

THE ELECTRIC CABINET
(Raised cabinet to have an easier access to the cables)
Direct acces from the lateral platform

MAIN ARM CYLINDER
Direct access from the central platform

LUBRICATION
(Centralized manual lubrication points on the maintenance walkway)

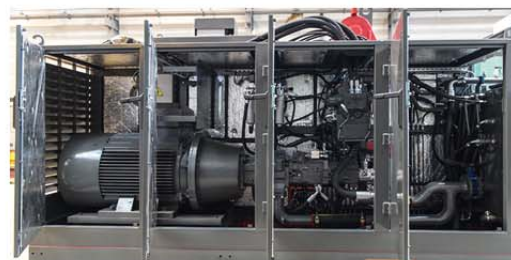


S65
S65.20E

SPECIFICATIONS

EQUIPMENTS

ACCESS	
Access ladder to the intermediate platform	●
Access stairway to the intermediate platform	Opt
Maintenance walkway	●
HYDRAULIC UNIT	
Lateral and upper openings allowing a total access to the hydraulic unit	●
Motor pump support equipped with an anti-vibration system - Noise mitigation	●
Enhanced cooling	Opt
Sound insulation	Opt
HYDRAULIC EQUIPMENTS	
Cylinders - Single piece chrome steel rods	●
Cylinders - equipped with safety valve and load limiter	●
Automatic lubrication of the joints and cylinders	●
Automatic lubrication of the tracks and rollers of the gear	Opt
Automatic lubrication of the toothing of the gear	Opt



OPERATING CABIN

VISIBILITY	
Panoramic windshield	●
2 Pantograph wipers + windshield washer	●
Adjustable sun shades	●
COMFORT	
Reversible air conditioning on the roof of the cabin	●
Additional fan heater	●
Heat-insulating laminated glass type Securit	●
Lateral polycarbonate glazing	Opt
Interior lighting	●
FM radio station / MP3 player	●
Briefcase	●
Hydrocarbon resistant, textured floor mat	●
Electrical outlets 220 volts / 110 volts	●
12V cigare lighter socket	Opt
Communication radio	Opt
Starting with breath test	Opt
Pressurization system of the cabin	Opt
Customer's logo on the arm	Opt



ELECTRICAL EQUIPMENTS	
Hydraulic collector - 4 power slip rings 3ph+t	●
Hydraulic collector - Additional switching ring	Opt
High Voltage / Low Voltage transformer	Opt
OPTIONS	
Handling tools (grapple, clamshell, etc)	Opt
Automatic Weighing system	Opt
Fire hose and protection	Opt



ERGONOMICS	
Ergonomic suspension seat	●
Adjustable backrest and armrests	●
Adjustable footrest	●
Operating and control panel of the crane	●
Hydraulic joysticks on the armrests	●
SERAM DATA : Control and defect recording module	●
SERAM DATA : GSM module for remote supervision	Opt
SERAM VISION : camera support	Opt
Anti-collision system: driving assistance	Opt
Cabin extension	Opt
Guard screen for the windshield	Opt
Lighting of the working area: 2 x 400W	●
Additional lighting	Opt



MAIN FEATURES

	S65.20E	
Power	65 t.m	21.8 US t.ft
Maximum horizontal outreach	20 m	66 ft
Length of the main arm	11.5 m	38 ft
Length of the dipper arm	8.5 m	28 ft

ELECTRIC MOTOR

Power	90 kW (400 volts - 50 hertz) / (480 volts - 60 hertz)
Type of starting	By variable frequency drive

DIESEL GENERATOR

(For crawlers support only)

Power	142 kVA
-------	---------

HYDRAULIC SYSTEM

Type of the hydraulic system	Load Sensing
Hydraulic pumps	Regulating pumps with Load Sensing regulation
Pump flow for the movements	315 l/min / 83 gal/min
Average working pressure	140 Bars / 2030 psi
Pump flow for the rotation	155 l/min (dedicated closed circuit) / 41 gal/min
Maximum rotation speed	7 tr/min
Hydraulic tank	860 l / 227 gal
Cooling	Oil/Air heat exchanger

WORKING EQUIPMENT

Hydraulic cylinders	220 x 120 x 1415 mm / 8.7 x 4.7 x 55.7 in
Swing motor	Radial piston engine with hydraulic safety brake
Ring gears	Crossed rollers with external toothing

SUPPORT

Fixed support (F)	Support fixed on a concrete base
Dimensions of the anchoring base	4000 x 4000 mm / 13.1 x 13.1 ft
Forces applied on the ground	Fz= 680 kN; Mx=1200 kN.m* / 153 kipf, 295,025 lbf.yd
Total weight of the machine	58 t / 64 US t

Free Standing support (AS)	Support on 4 shoes - No ground anchoring needed - Can be moved if needed
Dimensions	Base: 5500 x 5500 mm / 18 x 18 ft 4 shoes: 1500 x 1500 mm / 4.9 ft x 4.9 ft
Maximum forces applied on a shoe	Fz= 349 kN* / 78 kipf
Total weight of the machine	72 t / 79 US t

Trolley on rails (C)	Trolley equipped with 4 boggies, with 2 wheels each
Dimensions	Wheel base: 5500 x 5500 mm / 18 x 18 ft Wheels of boggies Ø630mm / 2.1 ft
Maximum forces applied on a bogie	Fz= 354 kN* / 80 kipf
Total weight of the machine	77 t / 85 US t

Crawlers (Ch)	Base: 5500 x 6000 mm / 18 x 19.7 ft
Dimensions	Width of the crawlers: 600 mm / 2 ft Speed: 0 to 2 km/h / 1.22 mph
Pression on the ground	12.77 N/cm²* / 18.52 psi
Total weight of the machine	92 t / 101 US t

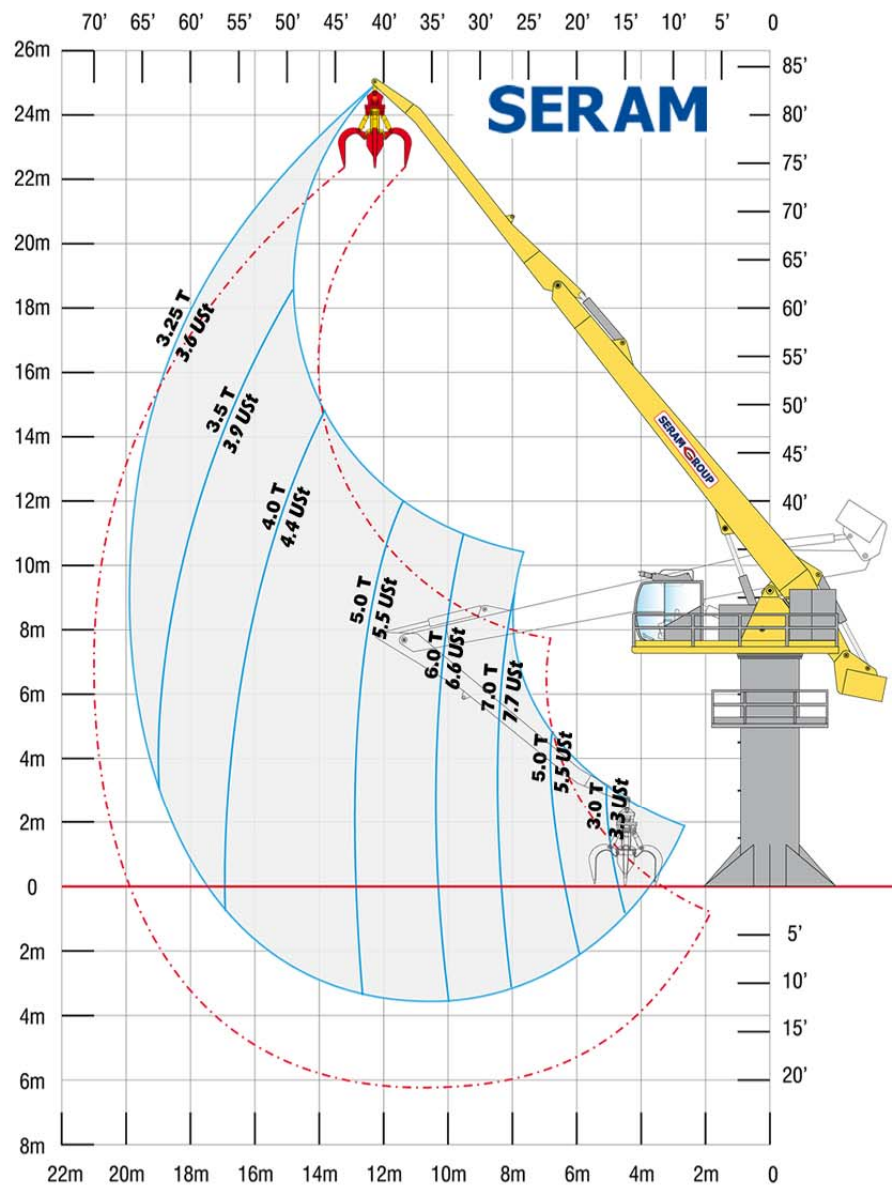
S65

S65.20E

LOAD CHARTS







S65.20E

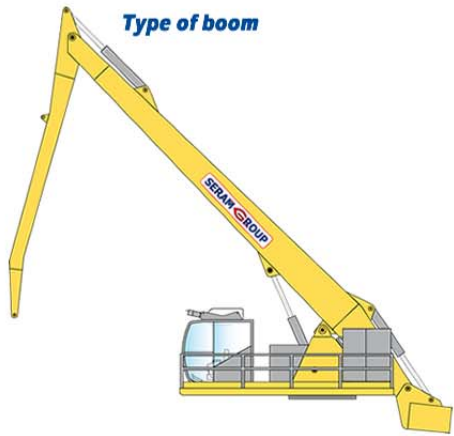


Load charts in Metric Tons and US Tons, valid at the end of the crane's boom without handling tool. According to the A8M8 classification of the FEM (European Federation of Materials Handling). The loading capacities are valid on a 360° working area.

Type of tools

-  Grapple
-  Clamshell
-  Electromagnet
-  Timber grapple

Type of boom



S65.20E

Type de cabine



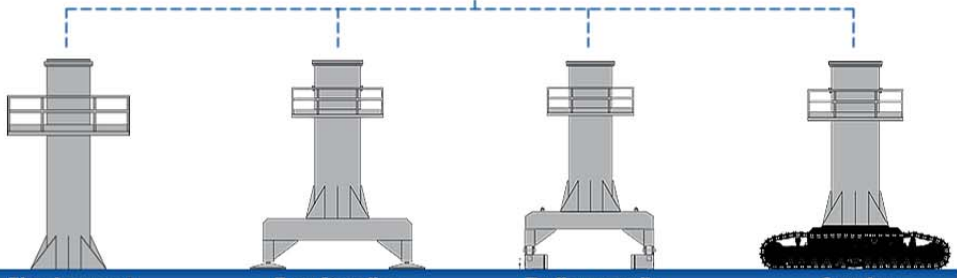
Type of engine



Power supply options

-  Diesel generator
-  Transformer
-  Cable reel

Type of supports

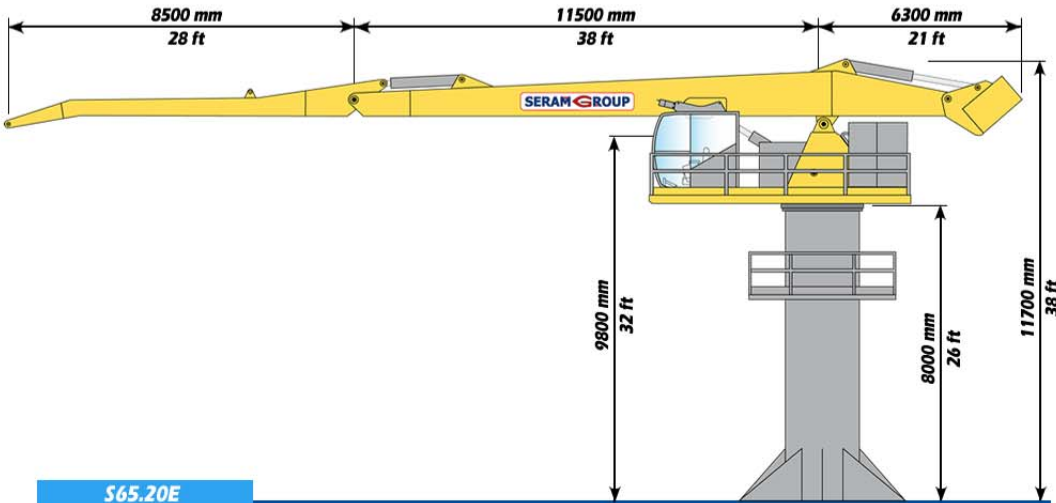


Fixed support (F)

Free Standing (AS)

Trolley on rails (C)

Crawlers (Ch)



S65.20E



EXAMPLES

S65

S65.20E



S65

S65.20E



Your dealer:

SERAM
SERAM SA

817 boulevard Marius Berliet - 66000 Perpignan (France)
Tél : 04 68 61 02 28 - seramsa@seram.net

WWW.SERAM.NET