

# SERAM

LIFTING BALANCED  
CRANES

# S250

S250.25E / S250.30E / S250.35E



**250** kW



**25 m / 35 m**  
**82 ft / 115 ft**



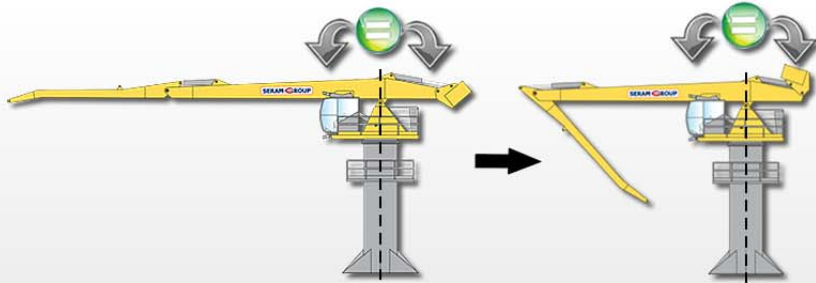
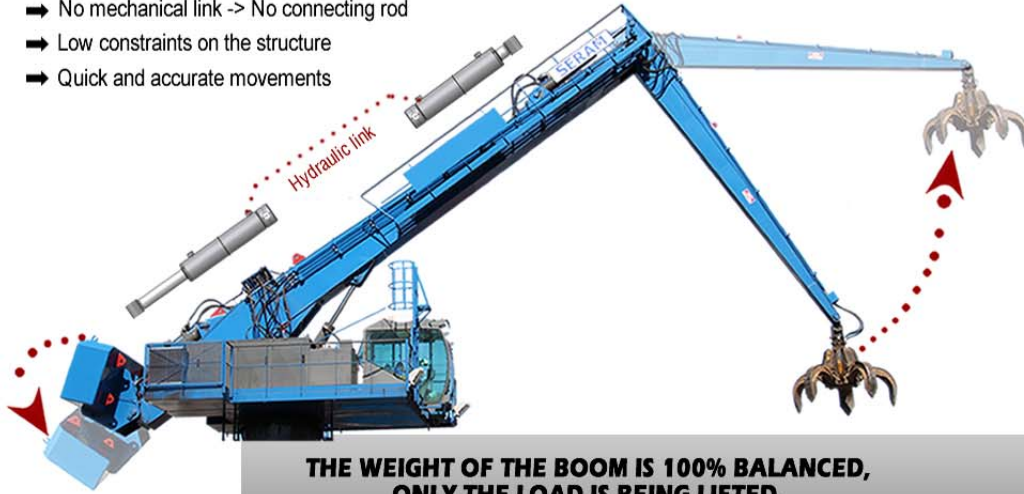
**175 t / 270 t**  
**193 USt / 297 USt**

# THE SERAM HYDRAULIC BALANCING THE EASY AND EFFICIENT SOLUTION

**S250**  
S250.25E / S250.30E / S250.35E

The SERAM crane is the **only** balanced crane **by hydraulic system**

- ➔ No mechanical link -> No connecting rod
- ➔ Low constraints on the structure
- ➔ Quick and accurate movements



Enjoy the **unique advantages** of the balanced crane

### Unequaled operating costs

Up to **80% energy consumption** compared to a diesel conventional crane

Diesel Conventional Crane

**- 50%**

Electric Conventional Crane

**- 80%**

SERAM Electric Balanced Crane

### An exceptional lifetime of the hydraulic components

The average working pressure of a SERAM crane is **55% lower** than a conventional crane.

**~ 320 bars  
~ 4650 psi**

Conventional Crane

**~ 140 bars  
~ 2030 psi**

SERAM Balanced Crane

# THE SERAM TECHNOLOGY

## THE SERAM STRUCTURE THE RELIABILITY

World Reference...

FEM CLASSIFICATION\*  
**A8M8**

The most performing grade on the market

+ of 2 Millions of lifting cycles

+ of 20 Years of operating

+ of 40 000 Hours of working operation

\*FEM: European Federation of Materials Handling

## THE SERAM MAINTENANCE THE SIMPLICITY

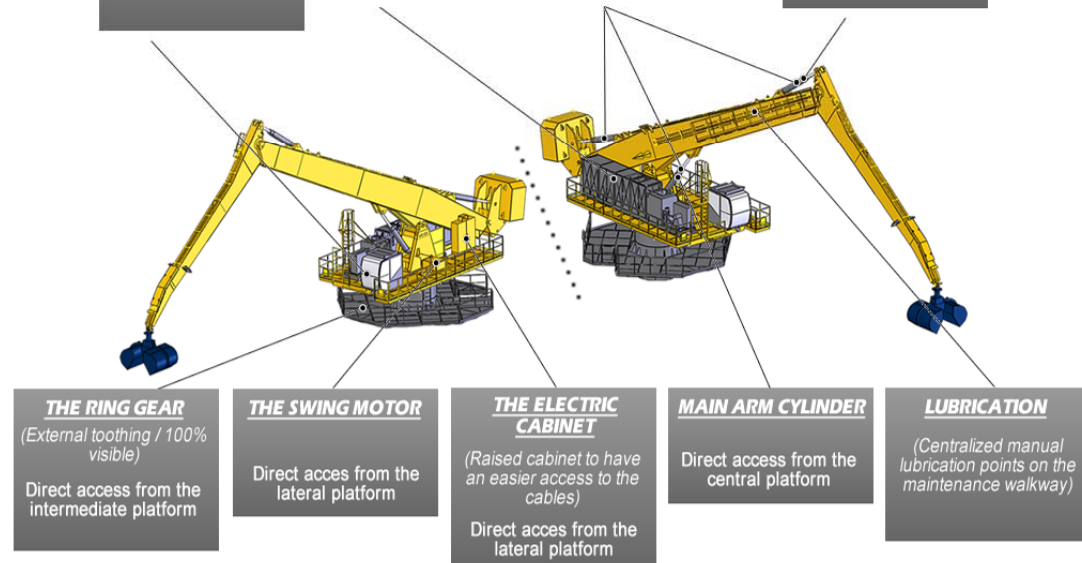
All the main components of the crane have an **easy access**

**The SERAM DATA**  
(System of assistance to diagnosis)  
Direct location on the dashboard of the cabin

**THE HYDRAULIC UNIT**  
Direct access from the lateral platform

**A SINGLE CYLINDER**  
(The 3 cylinders are identical and interchangeable)

**DIPPER ARM CYLINDER**  
Direct access from the maintenance walkway





# S250

S250.25E / S250.30E / S250.35E

# SPECIFICATIONS

## MAIN FEATURES

	S250.25E		S250.30E		S250.35E	
Power	250 t.m	84 USt.ft	250 t.m	84 USt.ft	250 t.m	84 USt.ft
Maximum horizontal outreach	25 m	82 ft	30 m	98 ft	35 m	115 ft
Length of the main arm	14 m	46 ft	17 m	56 ft	20 m	66 ft
Length of the dipper arm	11 m	36 ft	13 m	43 ft	15 m	49 ft

## ELECTRIC MOTOR

Power	250 kW (400 volts - 50 hertz) / (480 volts - 60 hertz)
Type of starting	By variable frequency drive

## DIESEL GENERATOR

(For crawlers only)

Power	470 kVA
-------	---------

## HYDRAULIC SYSTEM

Type of the hydraulic system	Load Sensing
Hydraulic pumps	Regulating pumps with Load Sensing regulation
Pump flow for the movements	890 l/min / 235 gal/min
Average working pressure	140 Bars / 2031 psi
Pump flow for the rotation	380 l/min (dedicated closed circuit) / 100 gal/min
Maximum rotation speed	3.2 tr/min
Hydraulic tank	2400 l / 634 gal
Cooling	Oil/Air heat exchanger

## WORKING EQUIPMENT

Hydraulic cylinders	320 x 210 x 2750 mm / 12.6 x 8.3 x 108.3 in
Swing motors	Double radial piston engine with hydraulic safety brake
Ring gears	Triple roller bearings with external toothing

## SUPPORT

Fixed support (F)	Support fixed on a concrete base		
Dimensions of the anchoring base	N/C - On request		
Forces applied on the ground	NC	NC	NC
Total weight of the machine	175 t / 193 USt	190 t / 209 USt	205 t / 226 USt

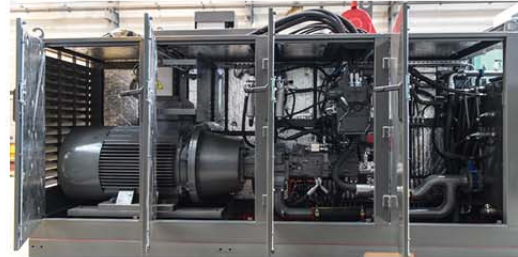
Free Standing support (AS)	Support on 4 shoes - No ground anchoring needed - Can be moved if needed		
Dimensions	Base: 10000 x 10000 mm / 32.8 x 32.8 ft 4 shoes: 1500 x 1500 mm / 4.9 x 4.9 ft		
Maximum forces applied on a shoe	Fz= 1040 kN* / 233.8 klpf	Fz= 1090 kN* / 245 klpf	Fz= 1140 kN* / 256.3 klpf
Total weight of the machine	210 t / 231 USt	220 t / 243 USt	236 t / 260 USt

Trolley on rails (C)	Trolley equipped with 4 boggies, with 2 wheels each		
Dimensions	Wheel base: 10500 x 10000 mm / 34.5 x 32.8 ft Wheels of Boggies Ø710mm / 2.3 ft		
Maximum forces applied on a boggie	Fz= 1050 kN* / 236 klpf	Fz= 1105 kN* / 248.4 klpf	Fz= 1185 kN* / 266.4 klpf
Total weight of the machine	224 t / 247 USt	237 t / 261 USt	250 t / 276 USt

Crawlers (Ch)	Base: 8500 x 8500 mm / 27.9 x 27.9 ft Width of the crawlers: 1000 mm / 3.3 ft Speed: 0 to 2 km/h / 0 to 1.2 mph		
Dimensions			
Presson on the ground	16.4 N/cm <sup>2</sup> * / 23.8 psi	17.4 N/cm <sup>2</sup> * / 25.2 psi	18.0 N/cm <sup>2</sup> * / 26.1 psi
Total weight of the machine	280 t / 309 USt	297 t / 327 USt	306 t / 337 USt

## EQUIPMENTS

<b>ACCESS</b>	
Access ladder to the intermediate platform	●
Access stairway to the intermediate platform	Opt
Maintenance walkway	●
<b>HYDRAULIC UNIT</b>	
Lateral and upper openings allowing a total access to the hydraulic unit	●
Motor pump support equipped with an anti-vibration system - Noise mitigation	●
Enhanced cooling	Opt
Sound insulation	Opt
<b>HYDRAULIC EQUIPMENTS</b>	
Cylinders - Single piece chrome steel rods	●
Cylinders - equipped with safety valves and with load limiters	●
Automatic lubrication of the joints and cylinders	●
Automatic lubrication of the tracks and rollers of the gear	●
Automatic lubrication of the toothing of the gear	Opt



## OPERATING CABIN

<b>VISIBILITY</b>	
Panoramic windshield	●
2 Pantograph wipers + windshield washer	●
Adjustable sun shades	●
<b>COMFORT</b>	
Reversible air conditioning on the roof of the cabin	●
Additional fan heater	●
Heat-insulating laminated glass type Securit	●
Lateral polycarbonate glazing	Opt
Interior lighting	●
FM radio station / MP3 player	●
Briefcase	●
Hydrocarbon resistant, textured floor mat	●
Electrical outlets 220 volts / 110 volts	●
12V cigare lighter socket	Opt
Communication radio	Opt
Starting with breath test	Opt
Pressurization system of the cabin	Opt
Customer's logo on the arm	Opt



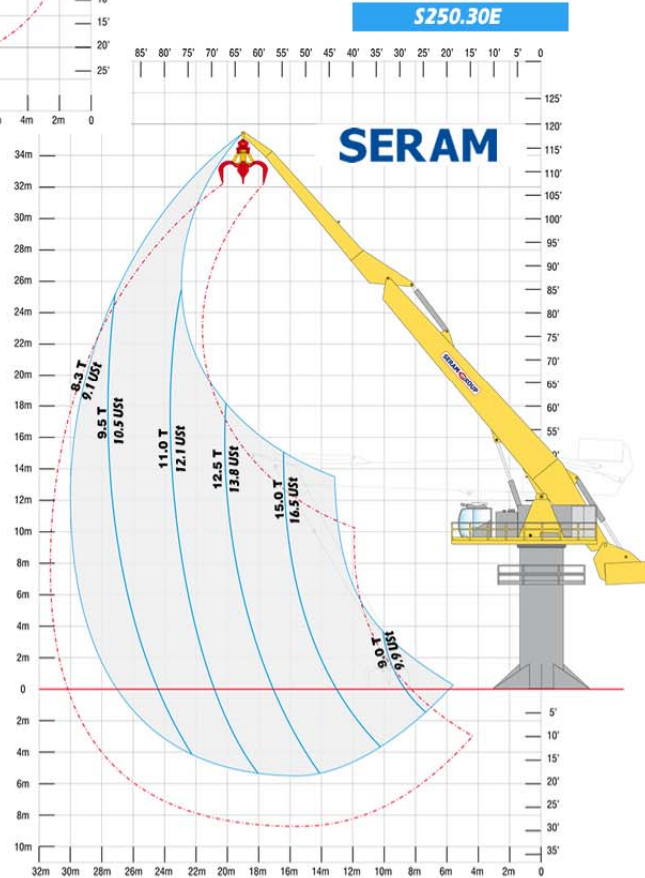
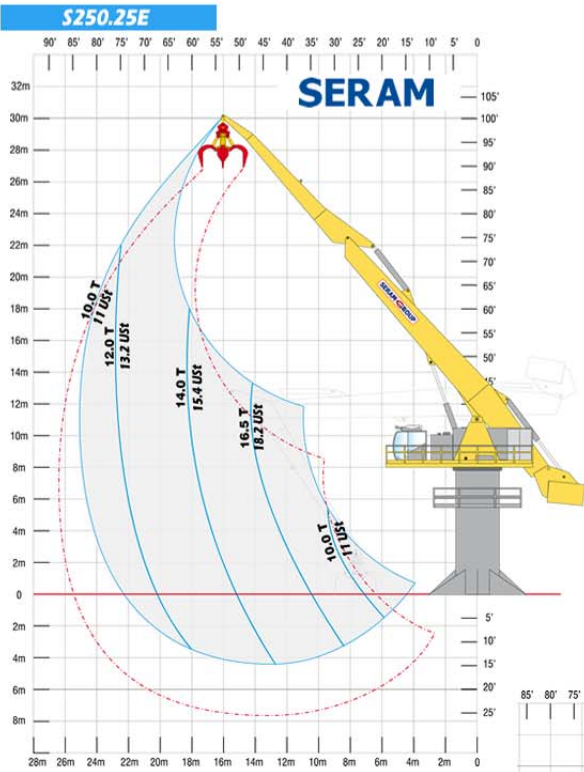
<b>ELECTRICAL EQUIPMENTS</b>	
Hydraulic collector - 4 power slip rings 3ph+t	●
Hydraulic collector - Additional switching ring	Opt
High Voltage / Low Voltage transformer	Opt
<b>OPTIONS</b>	
Handling tools (grapple, clamshell, etc)	Opt
Automatic Weighing system	Opt
Fire hose protection	Opt



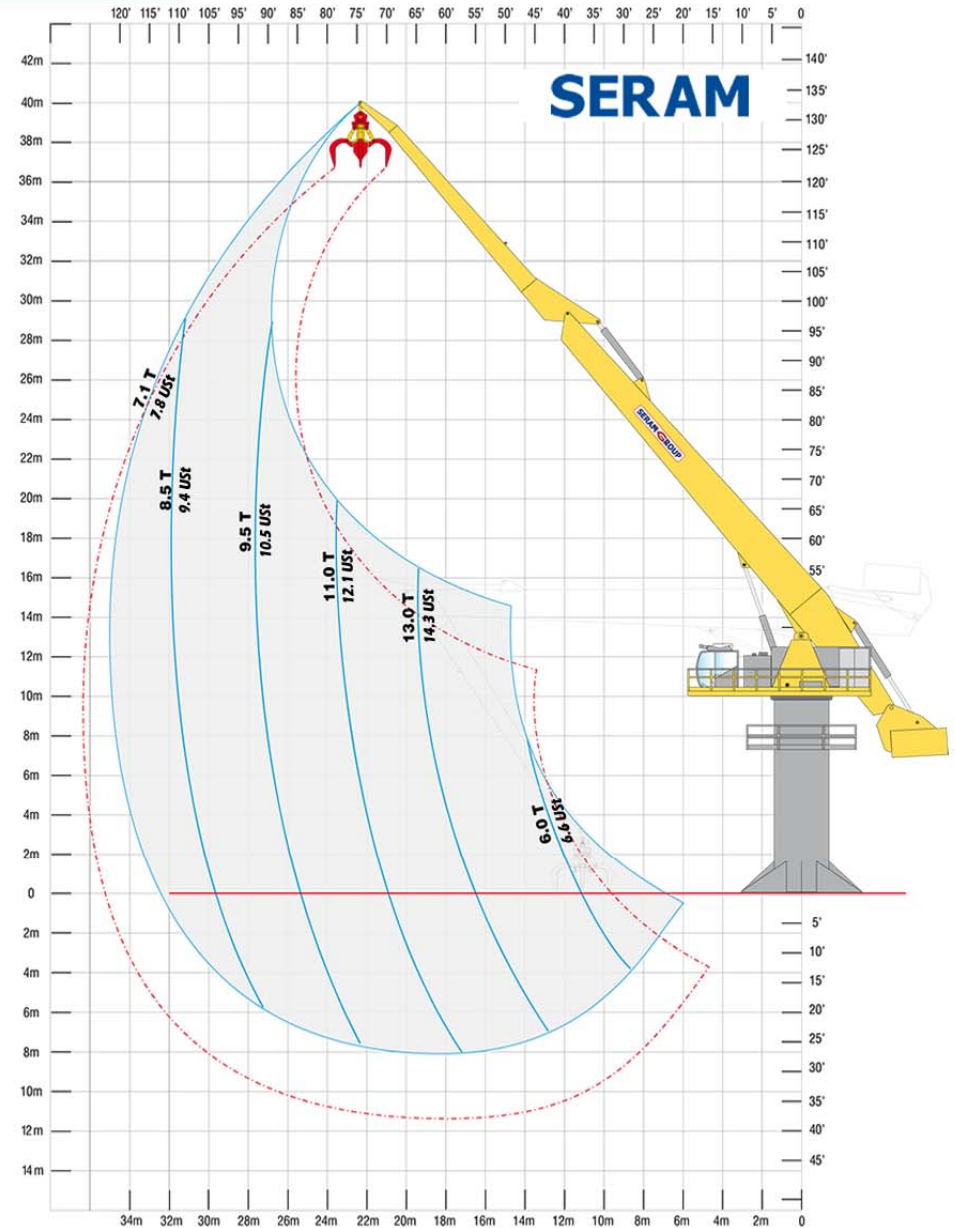
<b>ERGONOMICS</b>	
Ergonomic suspension seat	●
Adjustable backrest and armrests	●
Adjustable footrest	●
Operating and control panel of the crane	●
Hydraulic joysticks on the armrests	●
SERAM DATA : Control and defect recording module	●
SERAM DATA : GSM module for remote supervision	Opt
SERAM VISION : camera support	Opt
Anti-collision system: driving assistance	Opt
Cabin extension	Opt
Guard screen for the windshield	Opt
Lighting of the working area: 2 x 400W	●
Additional lighting	Opt

## S250

S250.25E / S250.30E / S250.35E



**S250.35E**



Load charts in Metric Tons and US Tons, valid at the end of the crane's boom without handling tool. According to the A8M8 classification of the FEM (European Federation of Materials Handling). The loading capacities are valid on a 360° working area.

# MODULAR SOLUTIONS

# S250

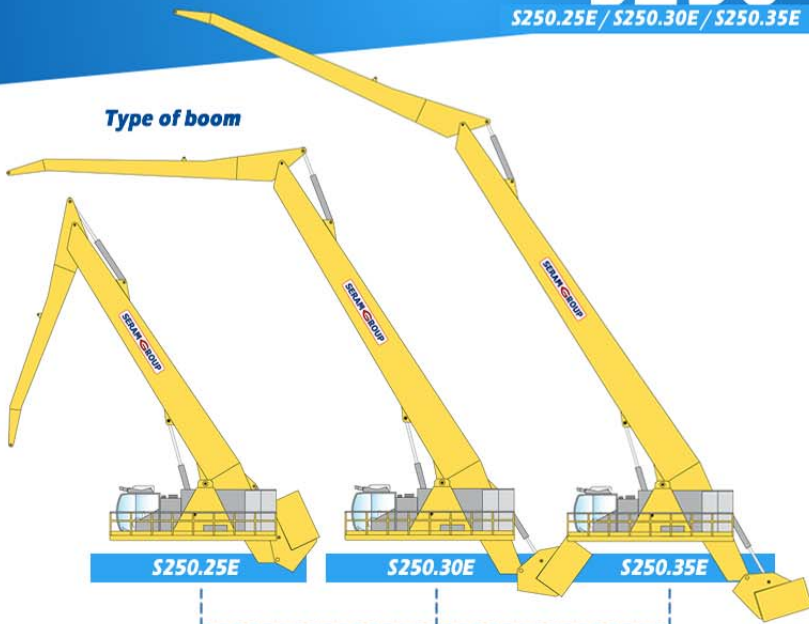
S250.25E / S250.30E / S250.35E

# DIMENSIONS

### Type of tools



### Type of boom



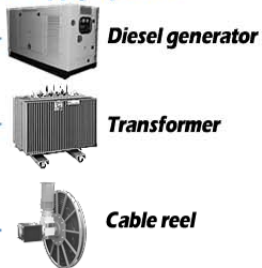
### Type of cabin



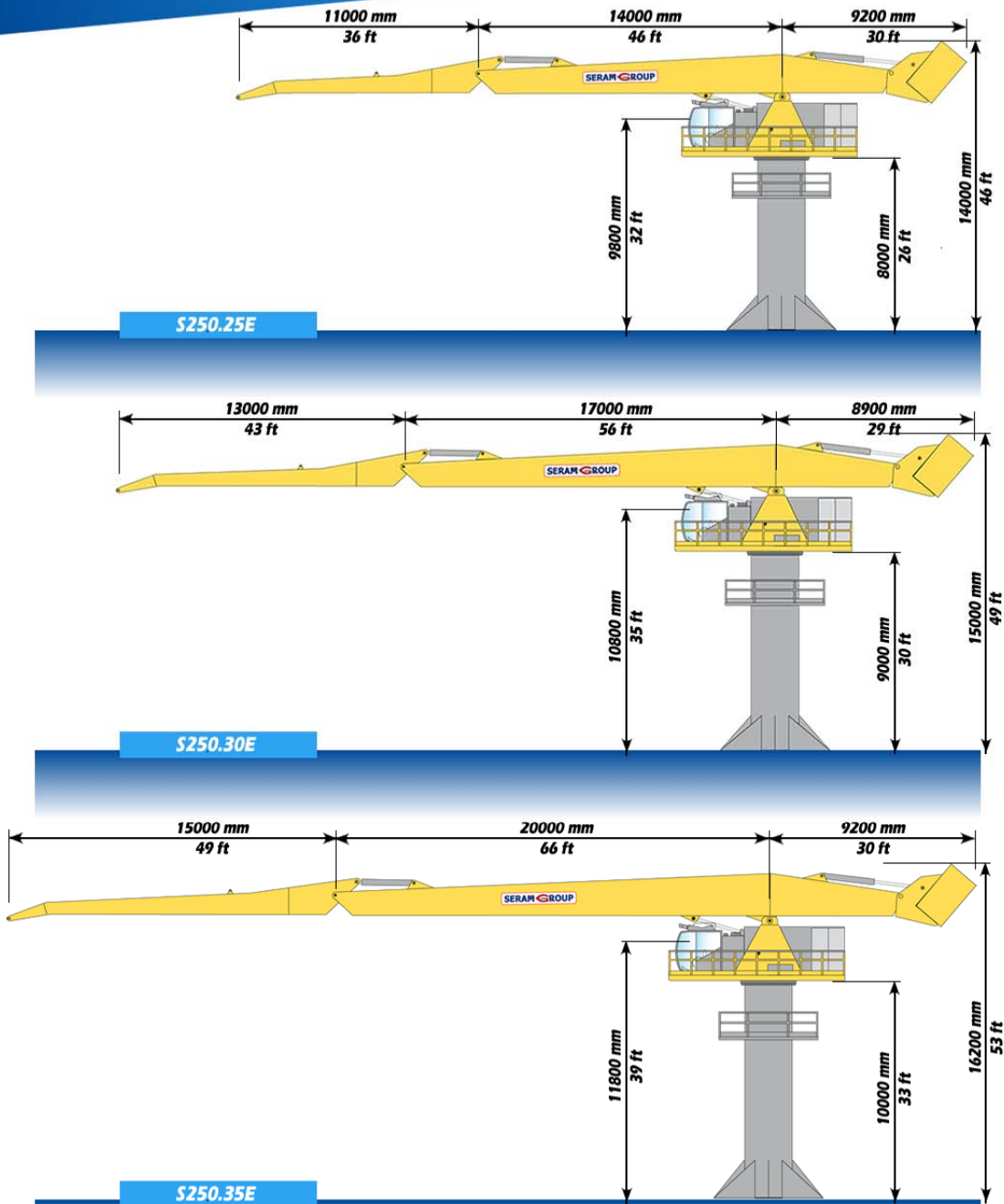
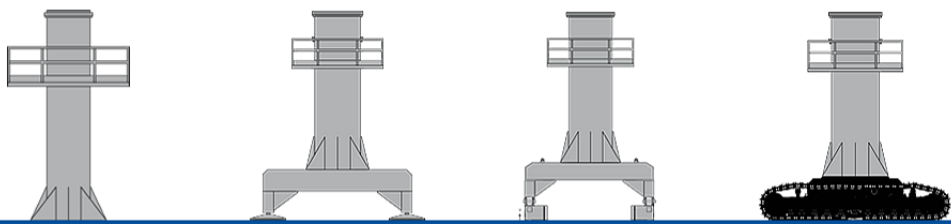
### Type of engine



### Power supply options



### Type of supports



# EXAMPLES

## S250

S250.25E / S250.30E / S250.35E



# S250

S250.25E / S250.30E / S250.35E



Your dealer:

**SERAM**  
**SERAM SA**

817 boulevard Marius Berliet - 66000 Perpignan (France)  
Tél : 04 68 61 02 28 - seramsa@seram.net

**WWW.SERAM.NET**