

**SERAM  
SECOND HAND**

# SERAM

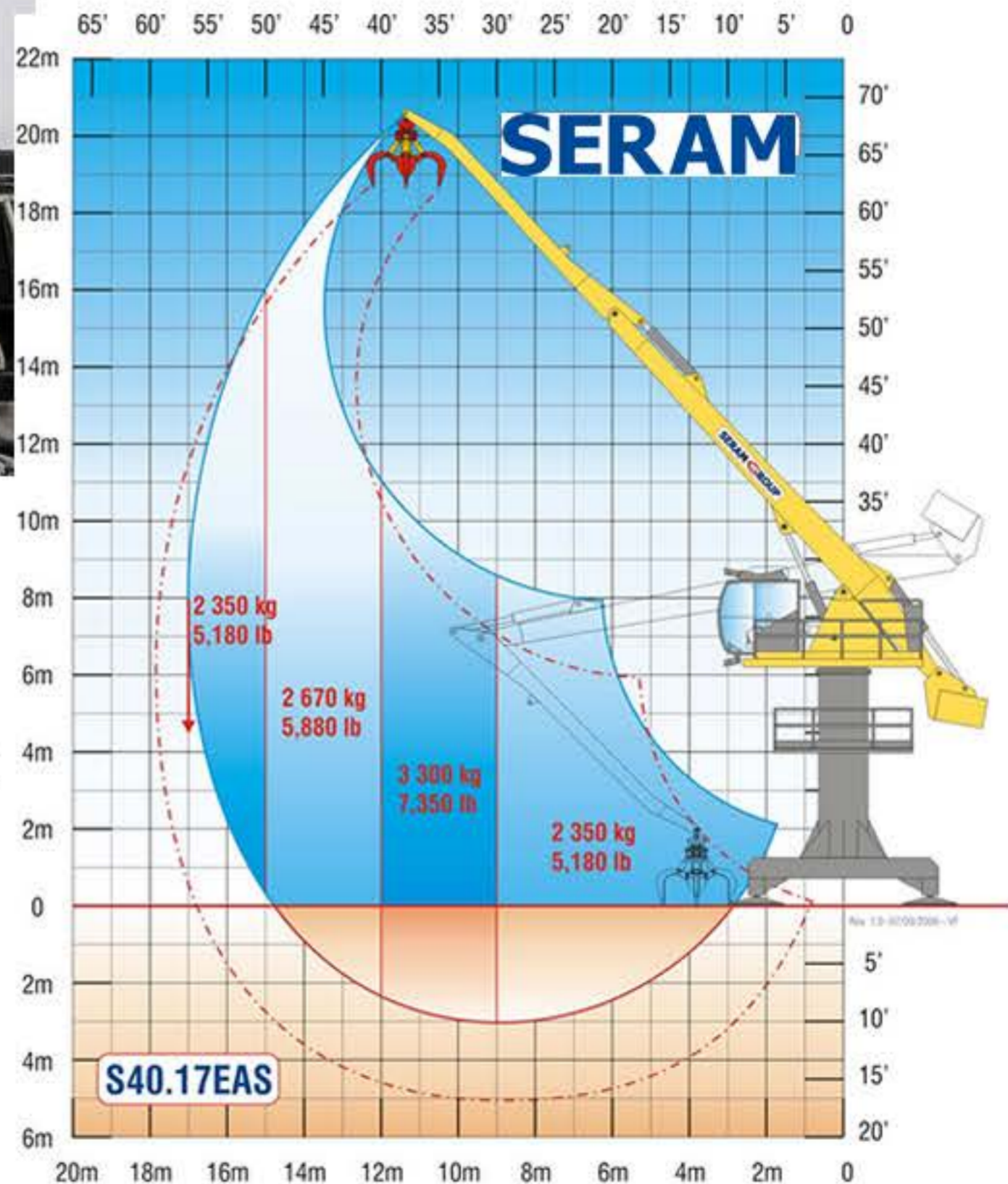
## S40.17EF refurbished

**FICHE  
002**



- Type: S40.17EF
- Year of manufacture: 2002
- Year of refurbishment: Planned 2017
- Support: Fixed  
Possibility of free standing support

- Max reach: 17 m
- Lifting capacity: 2.35 t at 17 m
- Motorization: 37 kw



## Contact us